



# Salmon Stream Temperature Fact Sheet

## Why temperature?

Water temperature affects all phases of the salmon lifecycle, including :

- \* timing of migration
- \* survivorship of eggs
- \* respiration
- \* metabolism
- \* availability of O<sub>2</sub>

Warm water temperature induces stress in salmon and makes them more vulnerable to pollution, predation and disease.

For more details about our methods or data, please contact:

Sue Mauger  
Cook Inletkeeper  
3734 Ben Walters Ln.  
Homer, AK 99603  
(907) 235-4068 x24  
[sue@inletkeeper.org](mailto:sue@inletkeeper.org)

## Beaver Creek

Cook Inletkeeper coordinates a Stream Temperature Monitoring Network across key salmon-bearing systems of the Cook Inlet basin. Our goal is to describe water temperature profiles and identify watershed characteristics that make specific streams more sensitive to climate change impacts. This fact sheet provides a summary of data collected on Beaver Creek through this collaborative effort.



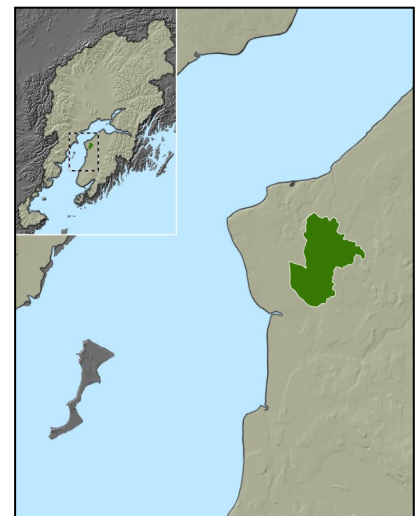
Water temperature monitoring site is located upstream of the Togiak Road access.

Latitude (N) 60.56100; Longitude (W) -151.12300

## Watershed facts

The Beaver Creek watershed (highlighted in green on map) is located on the central Kenai Peninsula. Beaver Creek flows into the Kenai River between the cities of Kenai and Soldotna.

Watershed size	35,953 acres
Maximum elevation	361 feet
Mean elevation	143 feet
Percent wetlands	33.3 %
Connected lakes	Yes





Adult salmon returning to freshwater streams to spawn are stressed by temperatures above 15°C (59°F), while juvenile salmon are affected by temperatures above 13°C (55°F).



In 2013, we completed a synthesis report of the stream temperature data collected from 2008-2012 to establish current water temperature conditions in 48 salmon streams and stream-specific sensitivity to climate change impacts. You can read the full report at: <http://inletkeeper.org/resources/contents/stream-temperature-synthesis-report>

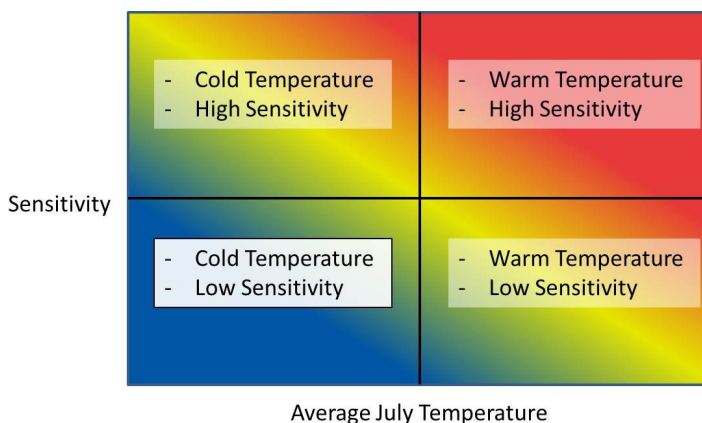
## Beaver Creek Temperature Summary

Below is a summary of Beaver Creek water temperature data from 2008-2012.

Maximum temperature recorded	16.5°C (61.7°F)
June average temperature	11.4°C (52.6°F)
July average temperature	12.6°C (54.7°F)
August average temperature	11.8°C (53.3°F)
Maximum 7-day average temperature	13.8°C (56.8°F)
Maximum 7-day maximum temperature	15.2°C (59.4°F)
# of days/year temperature exceeds 13°C (55°F)	39
# of days/year temperature exceeds 15°C (59°F)	10

## Climate Change Vulnerability

We can use our current knowledge of the relationship between air and water temperature to develop stream-specific predictions for future water temperature. “Sensitivity” is a term used to describe how much a stream’s water temperature will change with a 1°C (1.8°F) change in air temperature. A stream with a higher sensitivity (>0.75) will increase faster as air temperatures increase in the years ahead. And we can use a salmon-relevant threshold value of 13°C (55°F) for average July temperature to describe a stream as “cold” or “warm” to create a framework for assessing climate change vulnerability:



Beaver Creek falls in the “cold, low sensitivity” category, which indicates that stream temperatures will likely remain favorable for salmon and this system will continue to provide important cold-water habitat in the decades ahead.

**This baseline data set and our understanding of stream-specific sensitivity can guide future monitoring efforts to track climate change impacts and can help fisheries and land managers prioritize streams for research and protection efforts to ensure Cook Inlet wild salmon endure as thermal change continues.**