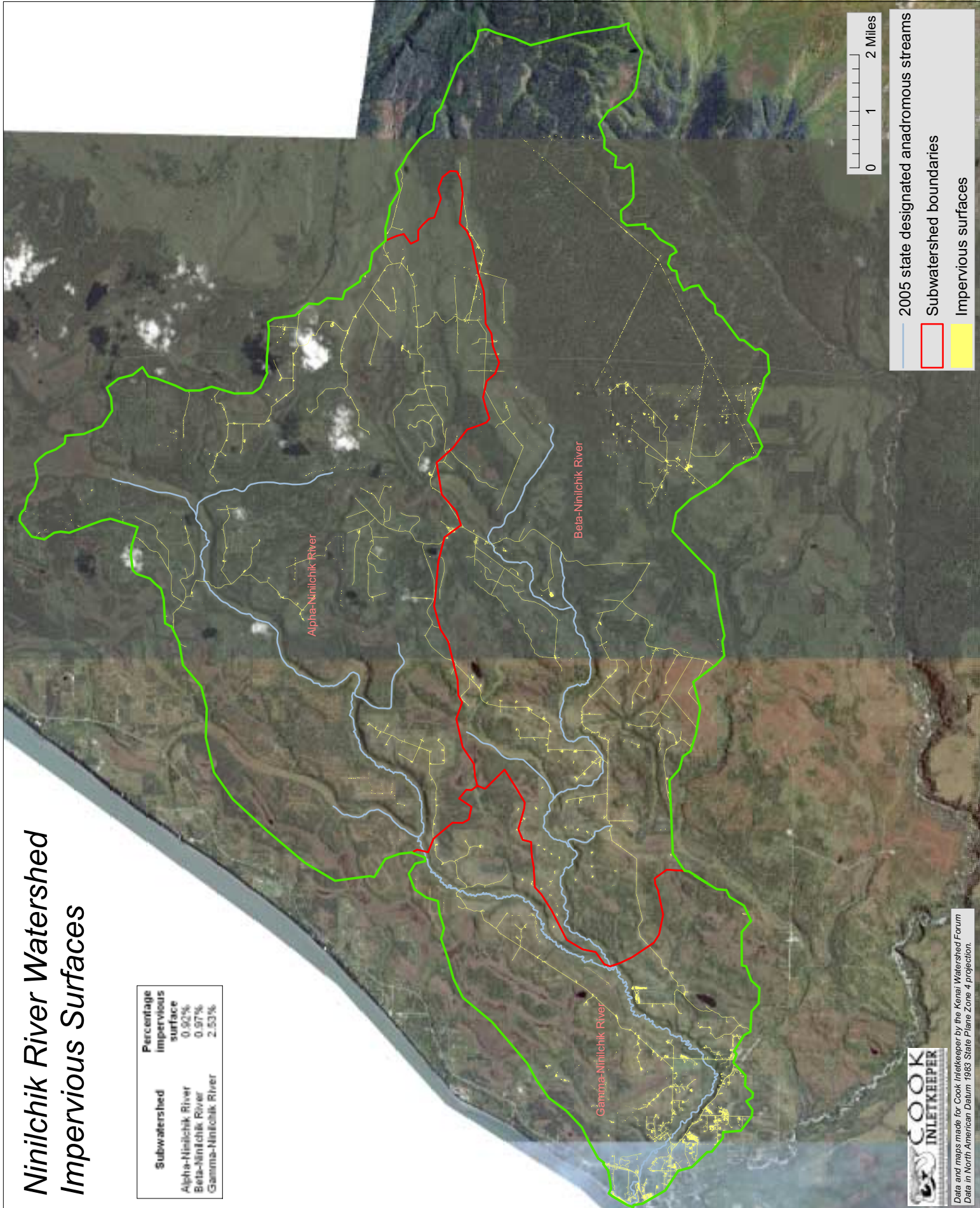
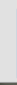




Ninilchik River Watershed Impervious Surfaces

Subwatershed	Percentage Impervious surface
Alpha-Ninilchik River	0.92%
Beta-Ninilchik River	0.97%
Gamma-Ninilchik River	2.53%



Date and maps made for Cook Inletkeeper by the Kenai Watershed Forum
Date in North American Datum, 1983 State Plane Zone 4 projection.

-  2005 state designated anadromous streams
-  Subwatershed boundaries
-  Impervious surfaces